

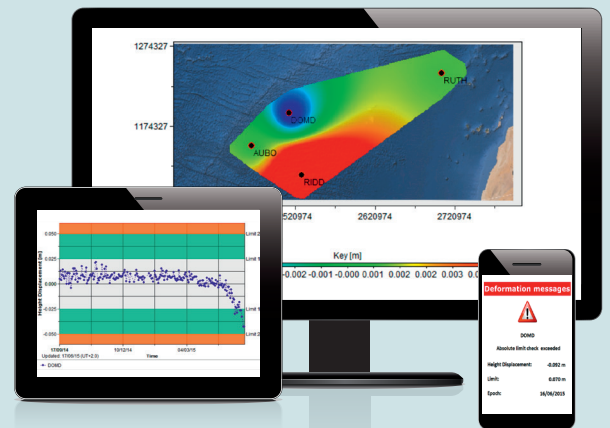
Leica CrossCheck GNSS Deformation Monitoring

Monitoring
Solutions



Complete solution for long-term stability control

- Control off-shore platform movements
- Wide-area monitoring (e.g. landslide, land subsidence, water reservoirs)
- Analyse ground movements in seismic area
- Overall GNSS processing, visualisation and reporting service
- Easy sensor configuration, interoperable with Leica Geosystems and third party GNSS sensors
- Multiple graphical and numerical data representation available, including the real-time status view
- Real-time information if tolerance of 3D vector exceeded
- Receive scheduled reports via email
- No in-house expert or processing infrastructure needed
- Customised service for each project

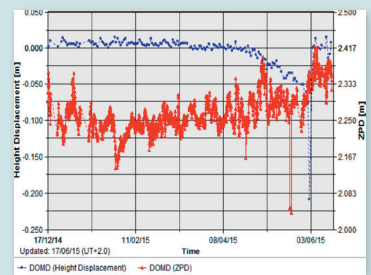




Leica CrossCheck – Beyond confidence

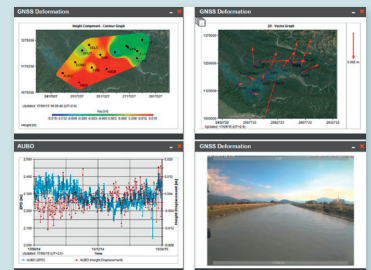
From receiver to displacement

Experts at Leica Geosystems configure and monitor GNSS data processing using the latest geodetic software and algorithms to provide highly accurate estimates of site movements. Requiring only the GNSS observation files, service offers sophisticated analysis, without the need for a specialist, IT infrastructure or software on the user's side. Customised to fit the specific project situation, Leica CrossCheck is an effective solution for a wide range of challenging monitoring applications.



Results in a secure web service

Interactive and flexible viewing options are available after a single login to the Leica CrossCheck web service. Access the accurate and timely overview on the status of projects by using a range of easy-to-interpret maps, graphs, images and tables. Leica CrossCheck is a secure web application that provides total, round-the-clock access to project data. Intuitive and easy-to-use result representation tools simplify project analysis and speed up the decision making.



Versatile reporting options

The Leica CrossCheck service includes advanced and customisable reporting options. Automatic reporting allows the creation of multiple professional PDF reports of monitoring data with defined content. Reports are easily distributed via email or can be downloaded on demand. Reports can be viewed and distributed to any device with access to an email account or to the web service, allowing those responsible to save valuable time and reduce risk.

| Status | Info | Name | Solution Epoch | ΔNorthing | ΔEasting | ΔHeight |
|--------|------|------|----------------|-----------|----------|----------|
| ⚠ | 📍 | ABTW | 16/04/15 | -0.702 m | -0.062 m | -0.031 m |
| ⚠ | 📍 | ANDE | 16/04/15 | -0.293 m | -0.084 m | 0.551 m |
| ⚠ | 📍 | ARBO | 16/06/15 | 0.582 m | 0.177 m | -0.526 m |
| 🟢 | 📍 | AUBO | 16/06/15 | 0.000 m | 0.001 m | 0.012 m |
| 🟢 | 📍 | BREG | 16/06/15 | -0.002 m | 0.009 m | 0.001 m |
| ⚠ | 📍 | BRIG | 16/04/15 | -0.080 m | 0.024 m | 0.009 m |
| 🟢 | 📍 | BVR2 | 16/04/15 | 0.003 m | 0.001 m | 0.006 m |
| 🟢 | 📍 | CHUR | 19/12/14 | - | - | - |
| 🟢 | 📍 | DIEP | 16/06/15 | 0.004 m | 0.001 m | -0.001 m |
| 🟢 | 📍 | DOMD | 16/06/15 | -0.001 m | 0.001 m | 0.008 m |
| 🟢 | 📍 | FFEL | 16/03/15 | - | - | - |
| 🟢 | 📍 | FLEK | 16/06/15 | 0.003 m | 0.001 m | 0.003 m |
| 🟢 | 📍 | FLUM | 16/06/15 | -0.002 m | 0.006 m | 0.003 m |

Illustrations, descriptions and technical data are not binding. All rights reserved. Printed in Switzerland – Copyright Leica Geosystems AG, Heerbrugg, Switzerland, 2015. 771720en – 06.15 – INT